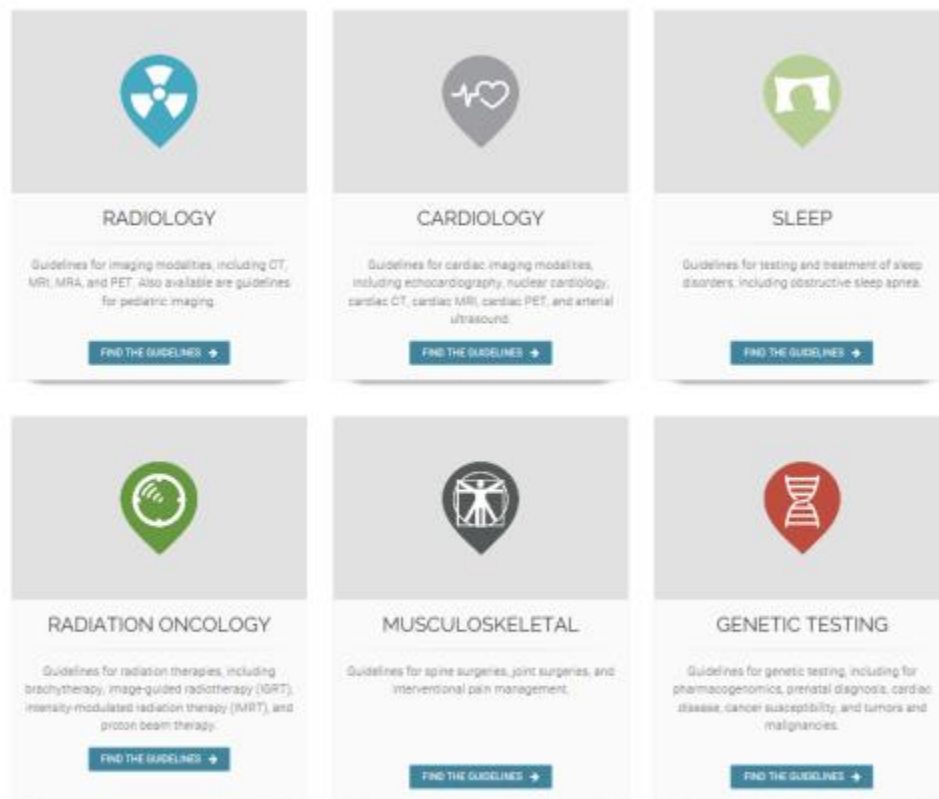


## Use grouped CPT codes for AIM Specialty Health authorizations

AIM Specialty Health® (AIM) groups CPT codes on authorizations so they can be reviewed together to support a procedure or therapy. Grouped codes are used for procedures such as radiology, cardiology, and sleep and radiation therapy programs. The groupings are listed on the AIM website under [AIM Clinical Appropriateness Guidelines and Cancer Treatment Pathways](#) as shown below.



Some of the programs will provide further explanation of the guidelines to make searching for a set of CPT codes easier.

Open specific radiology guidelines

- Administrative guidelines
- MRI bone marrow blood supply
- Abdomen and pelvic imaging
- Magnetic resonance spectroscopy (MRS)
- Chest imaging
- PET and other PET applications, including oncologic tumor
- Extremity imaging
- Quantitative CT (QCT) bone mineral densitometry
- Head and neck imaging
- Spine imaging

After opening the guideline document, you will be able to view the name of the procedure with the grouped codes. For example, computed tomography (CT) of the head is displayed in the following way:

# Computed Tomography (CT) Head

## CPT Codes

70450..... CT of head, without contrast

70460..... CT of head, with contrast

70470..... CT of head, without contrast, followed by re-imaging with contrast

---