



Mission:  
**HPV** CANCER  
FREE

# HPV Vaccination Cancer Prevention

**October 17, 2018**  
Light breakfast to be served.

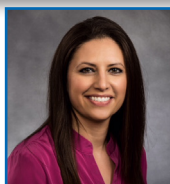
**8 a.m. - 10 a.m.**  
Registration begins at 7:30 a.m.

**KU School of Medicine - Wichita, Sunflower Room**  
**1010 North Kansas, Wichita, Kan.**

**Also broadcast via Webinar**

Parking: Please park in the Orange/Tan Permit parking lot on the north side of 10th Street. A campus map is located at: <http://wichita.kumc.edu/general-info/campus-map.html>. You may need to copy and paste in your preferred internet browser. The parking lot is noted as a grey box on the top of the map. **Please enter through the Main Entrance.**

## FEATURED SPEAKERS



### **Gretchen Homan, M.D.**

Division of Ambulatory Pediatrics  
Associate Professor  
University of Kansas School of Medicine – Wichita  
KU Pediatric Clinic



### **Kari Harris, M.D.**

Director, Adolescent Medicine  
Division of Ambulatory Pediatrics  
Associate Professor  
University of Kansas School of Medicine – Wichita  
KU Pediatric Clinic

### Course Description

This session is designed to describe the approaches that providers and office staff in health plans and Medicaid Managed Care Organizations can take to improve HPV Vaccinations with a cancer prevention focus. This course will focus on techniques to effectively communicate with parents, especially those that may be vaccine hesitant.

### Target Audience

Health plan and institutional partners involved in HPV vaccination including primary care providers, pediatricians, nurses, social workers, OB/GYN providers, quality directors, office staff etc.

### Cost

There is no cost to attend this program, however pre-registration is required by noon, October 10, 2018.

### How to Register

**Online:** [www.kumc.edu/AHECcalendar](http://www.kumc.edu/AHECcalendar)

**Mail:** Complete and return the attached registration form to:

AHEC Statewide Office, 1501 S. Joplin, Shirk Hall, 4th Floor, Pittsburg, KS, 66762  
**Phone:** (620) 235-4040 **Fax:** (620) 235-4041

### Agenda

- 7:30 - 8:00 a.m. Registration
- 8:00 - 8:10 a.m. Introduction
- 8:10 - 9:10 a.m. Listen to Many, Speak to Few: Critical Conversations Regarding HPV Vaccination  
Gretchen Homan, M.D., and Kari Harris, M.D.
- 9:10 - 9:40 a.m. Hoping For an STD? How Did I Get Here?  
Michael J. McGonigle, HPV Survivor
- 9:40 - 10:00 a.m. Questions and Answers/Wrap Up

Please join us immediately following the education program to view clips from the documentary "Someone You Love: The HPV Epidemic". If you are interested learning more about the documentary or hosting a showing in your community, staff will be available to discuss support availability.

### Objectives

At the conclusion of the program, participants will be able to:

- Review HPV disease burden
- Discuss vaccine safety and effectiveness
- Implement vaccination counseling especially for vaccine hesitant parents

**For more information: Call KU Medical Center AHEC at (620) 235-4040.**

## SPONSORED BY



# HPV Vaccination Cancer Prevention Webinar/Wichita, Kan. October 17, 2018

## Continuing Education Credit

All participants requesting continuing education credit must complete validation of attendance and evaluation form online. The link, instructions, and deadlines for completion will be provided to on-site participants and emailed to webinar participants.

**Physicians:** This activity has been planned and implemented in accordance with the accreditation requirements and policies of the Accreditation Council for Continuing Medical Education (ACCME) through the joint providership of The University of Kansas Medical Center Office of Continuing Medical Education, American Cancer Society, UnitedHealthcare Community Plan of Kansas, Sunflower Health Plan and Amerigroup Kansas, Inc.

The University of Kansas Medical Center Office of Continuing Medical Education is accredited by the ACCME to provide continuing medical education for physicians.

University of Kansas Medical Center Continuing Education designates this live activity for a maximum of 2.0 AMA PRA Category 1 Credit(s)<sup>™</sup>. Physicians should claim only the credit commensurate with the extent of their participation in the activity.

**APRNs/Nurses:** The University of Kansas Medical Center Area Health Education Center West is approved as a provider of CNE by the Kansas State Board of Nursing. This course offering is approved for 2.4 contact hours applicable for APRN, RN, or LPN relicensure. Kansas State Board of Nursing provider number: LT0086-1149. Karen Aufdemberge, BSN, RN, Coordinator.

**Social Workers:** The University of Kansas Medical Center Area Health Education Center East, as an approved provider of continuing education by the Kansas Behavioral Sciences Regulatory Board presents this offering for a maximum of 2.25 hours credit applicable for relicensure of LASWs, LBSWs, LMSWs and LSCSWs. Kansas Provider Number 12-002. Karen Aufdemberge BSN, RN, coordinator.

If a participant misses more than 10% of an offering, a certificate of continuing education will not be issued. Partial credit is NOT given.

All other attendees will receive a certificate of attendance.

## Planning Committee

Kasey Mullins, RN, Director, Quality Management, UnitedHealthcare; Susan Hood, RN, MSN, Senior Director, Quality Improvement, Sunflower Health Plan; Cynthia Kay Small, RN, MPH, Director II, Quality Management, Amerigroup Kansas, Inc.; Dan Leong, Health Systems Manager, State-Based, North Region, American Cancer Society, Inc.; Mary Beth Warren, MS, RN, Executive Director, University of Kansas Medical Center, Area Health Education Centers; Elena Leal, RN, BSN, Quality Improvement, Sunflower Health Plan; Mariza Greenwald, RN, BSN, Manager, Quality Improvement, Sunflower Health Plan; Stephen Smith, QI Coordinator, Quality Improvement, Sunflower Health Plan; Patricia Johnson, RN CCM, Quality Improvement, Sunflower Health Plan; Ashley Beland, RN Amerigroup Kansas, Inc.; Sandi Edmonds, RN, UnitedHealthcare

## Cancellation Policy

After registering if your plans change and you will not be able to attend the event, please notify our office at (620) 235-4040 as soon as possible.

KU Medical Center AHEC reserves the right to cancel the program in the event of insufficient registration. KU Medical Center AHEC will not be responsible for any losses incurred by registrants, including but not limited to airline cancellation charges or hotel deposits.

## Program Accessibility

We accommodate persons with disabilities. Please mark the box below and a continuing education representative will contact you to discuss your needs.

## Nondiscrimination Statement

The University of Kansas prohibits discrimination on the basis of race, color, ethnicity, religion, sex, national origin, age, ancestry, disability, status as a veteran, sexual orientation, marital status, parental status, gender identity, gender expression and genetic information in the University's programs and activities. The following person has been designated to handle inquiries regarding the non-discrimination policies: Director of the Office of Institutional Opportunity and Access, IOA@ku.edu, 1246 W. Campus Road, Room 153A, Lawrence, KS, 66045, (785)864-6414, 711 TTY.

## Registration Form

HPV Vaccination Cancer Prevention • Webinar/Wichita, Kan. • Oct. 17, 2018



### Register Online

Register for programs online by visiting [www.kumc.edu/AHECcalendar](http://www.kumc.edu/AHECcalendar) or by scanning the code to the left on your mobile device.

### Register by Mail/Phone/Fax

AHEC Statewide Office Phone: (620) 235-4040  
1501 S. Joplin Fax: (620) 235-4041  
Shirk Hall, 4th Floor  
Pittsburg, KS 66762

**Registration Deadline: Noon, October 10, 2018**

## Contact Information

Name \_\_\_\_\_ Credential(s) \_\_\_\_\_

Please check (✓) preferred address: Professional Title \_\_\_\_\_

Home Address  Work Mailing Address

Street \_\_\_\_\_ Street \_\_\_\_\_

City/State/Zip \_\_\_\_\_ City/State/Zip \_\_\_\_\_

County \_\_\_\_\_ County \_\_\_\_\_

Employer \_\_\_\_\_ Position \_\_\_\_\_

Professional License # \_\_\_\_\_ Email Address \_\_\_\_\_

Home Phone (\_\_\_\_) \_\_\_\_ - \_\_\_\_\_ Work Phone (\_\_\_\_) \_\_\_\_ - \_\_\_\_\_ Cell Phone (\_\_\_\_) \_\_\_\_ - \_\_\_\_\_

## Attendance Option

Attend in-person  Attend via webinar

## Requested Continuing Education Type

CME  APRN  CNE  SW  Certificate of Attendance

**Notice:**  If you will need special accommodations, please check the box and return to AHEC Statewide Office at least two weeks prior to the program date. You will be contacted personally by a member of the continuing education staff.

OFFICE USE ONLY